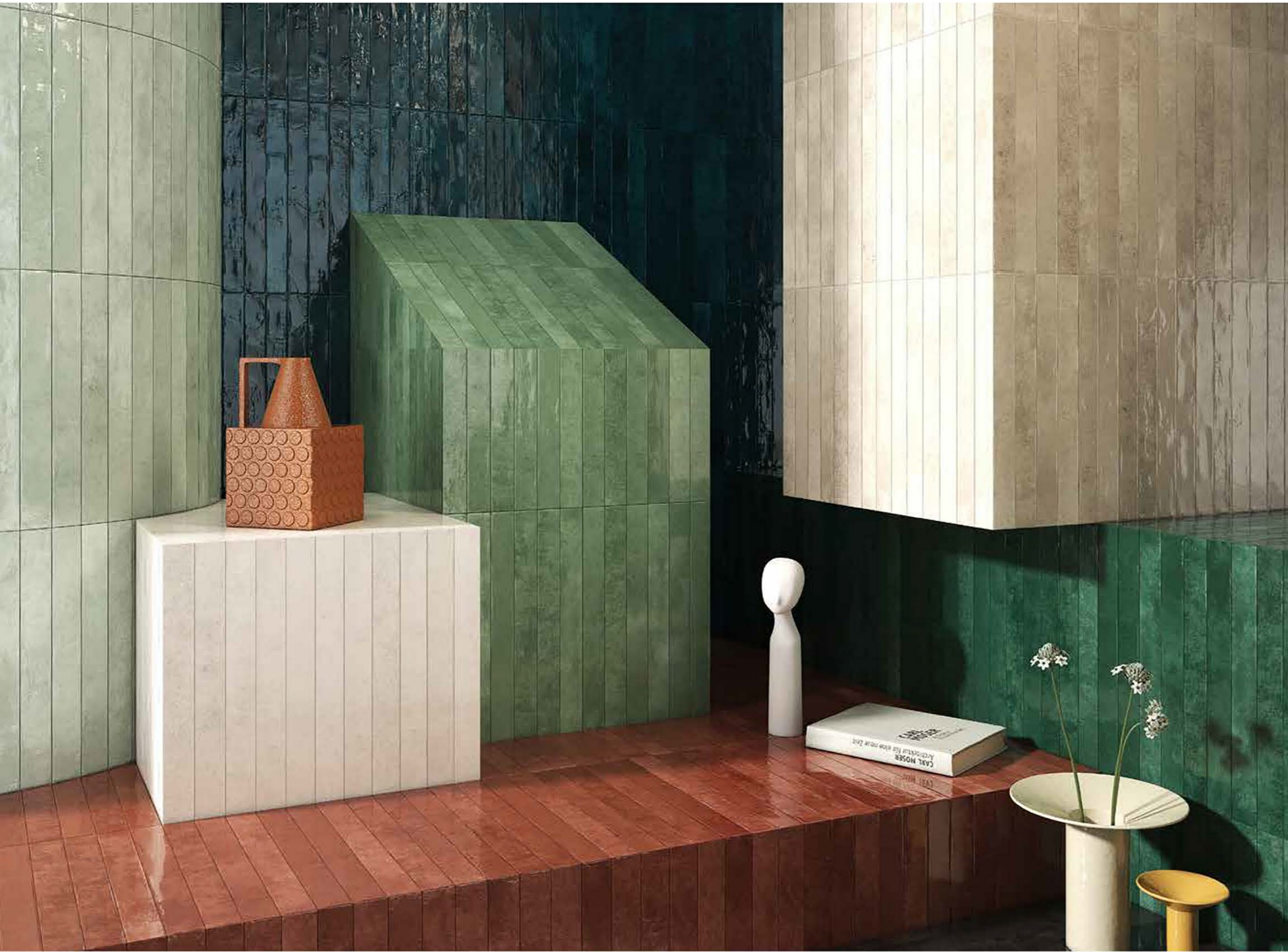




Intreccio





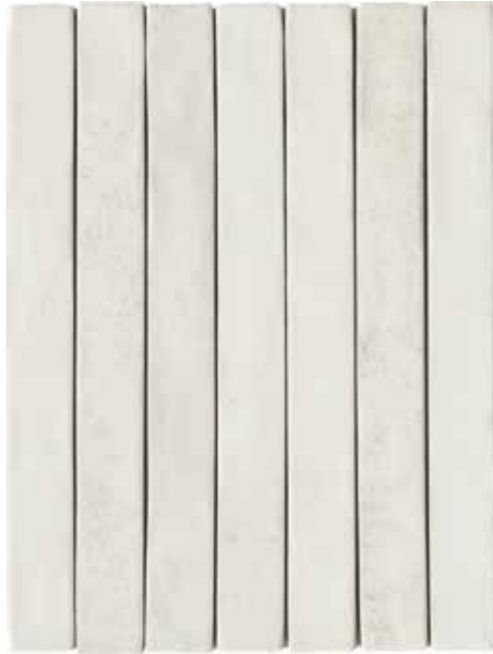
Intreccio
Porcelain stoneware,
walls & floors, 4,8x45 cm.
Gres porcellanato,
rivestimento & pavimento, 4,8x45 cm.
± 9,5 mm
glossy

Aquifer 4,8x45 cm glossy wall
Crudatech Sunset 120x120 cm matt
floor (Terratinta Ceramiche)





Aquifer 4,8x45 cm glossy wall
Crudatech Sunset 120x120 cm matt floor (Terratinta Ceramiche)



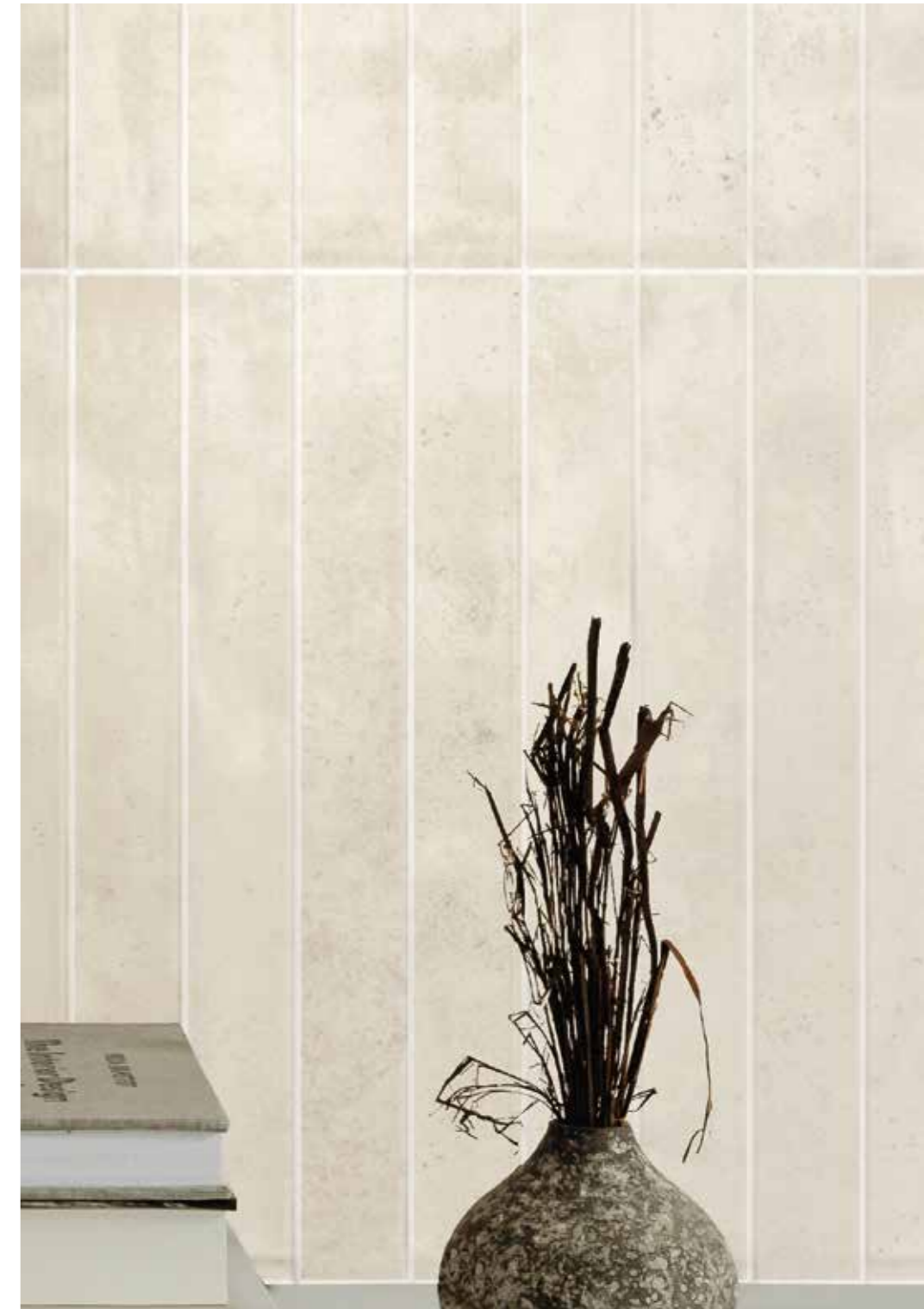
Ceramic



Clay

Clay 4,8x45 cm glossy

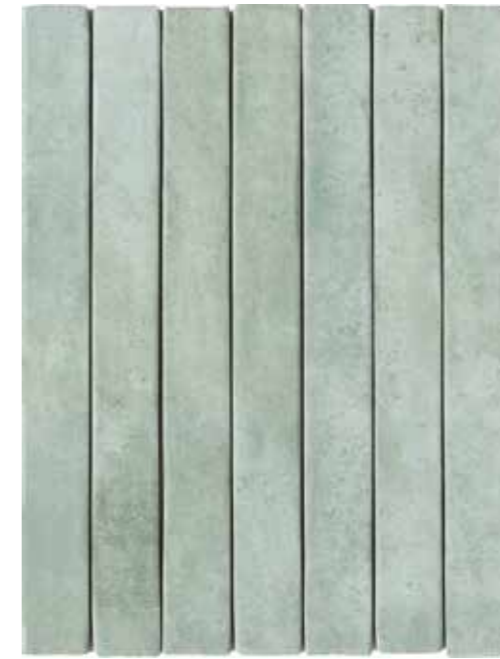




Clay 4,8x45 cm glossy



Mint 4,8x45 cm glossy wall
Crudatech Shadow 120x120 cm matt floor (*Terratinta Ceramiche*)



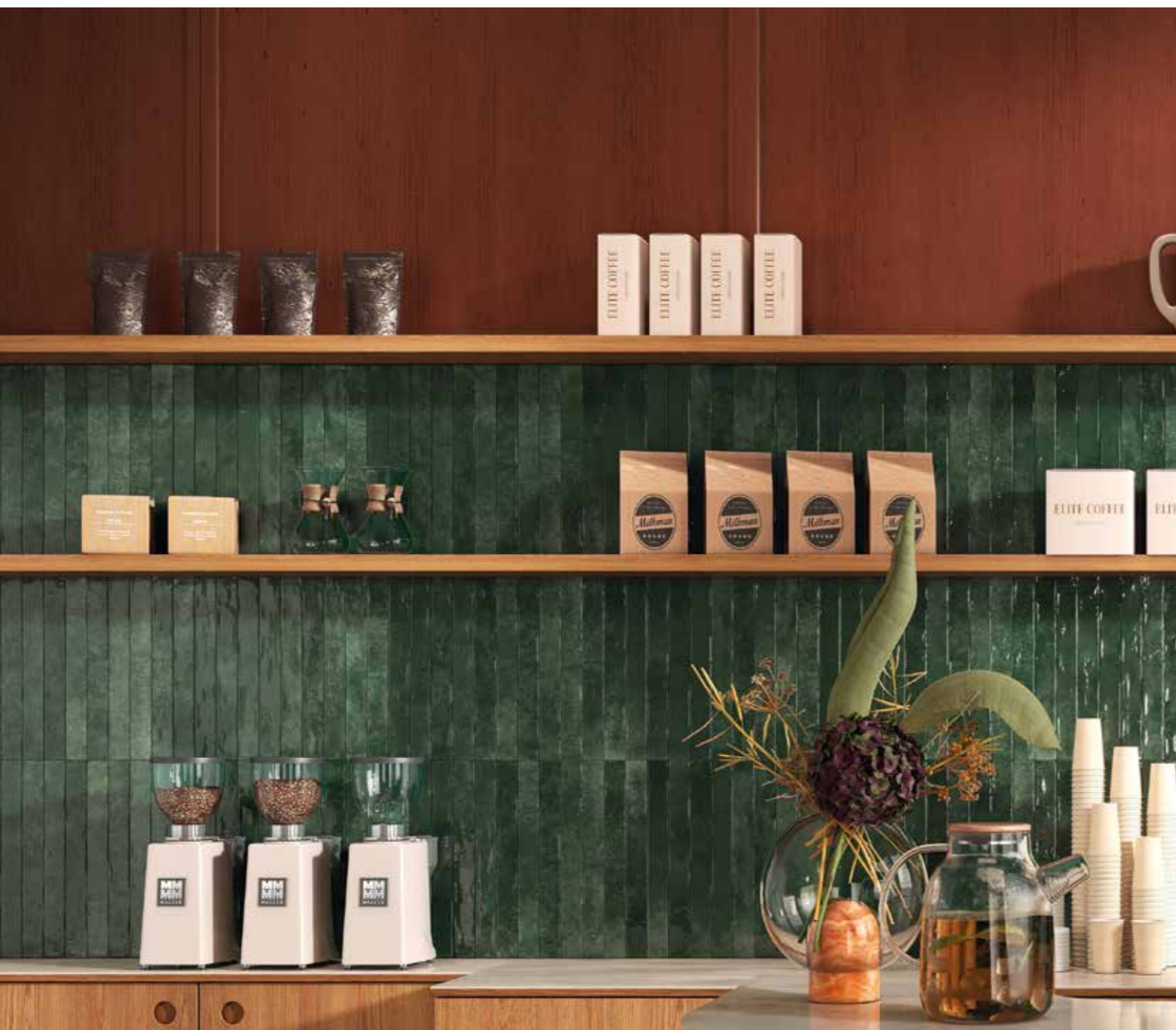
Aquifer



Mint



Lagoon 4,8x45 cm glossy wall
Crudatech Shadow 120x120 cm matt floor (*Terratinta Ceramiche*)



Emerald 4,8x45 cm glossy wall
 Granito Taupe 80x80 cm matt floor (Ceramica Magica)





Emerald



Lagoon



Lagoon 4,8x45 cm glossy wall



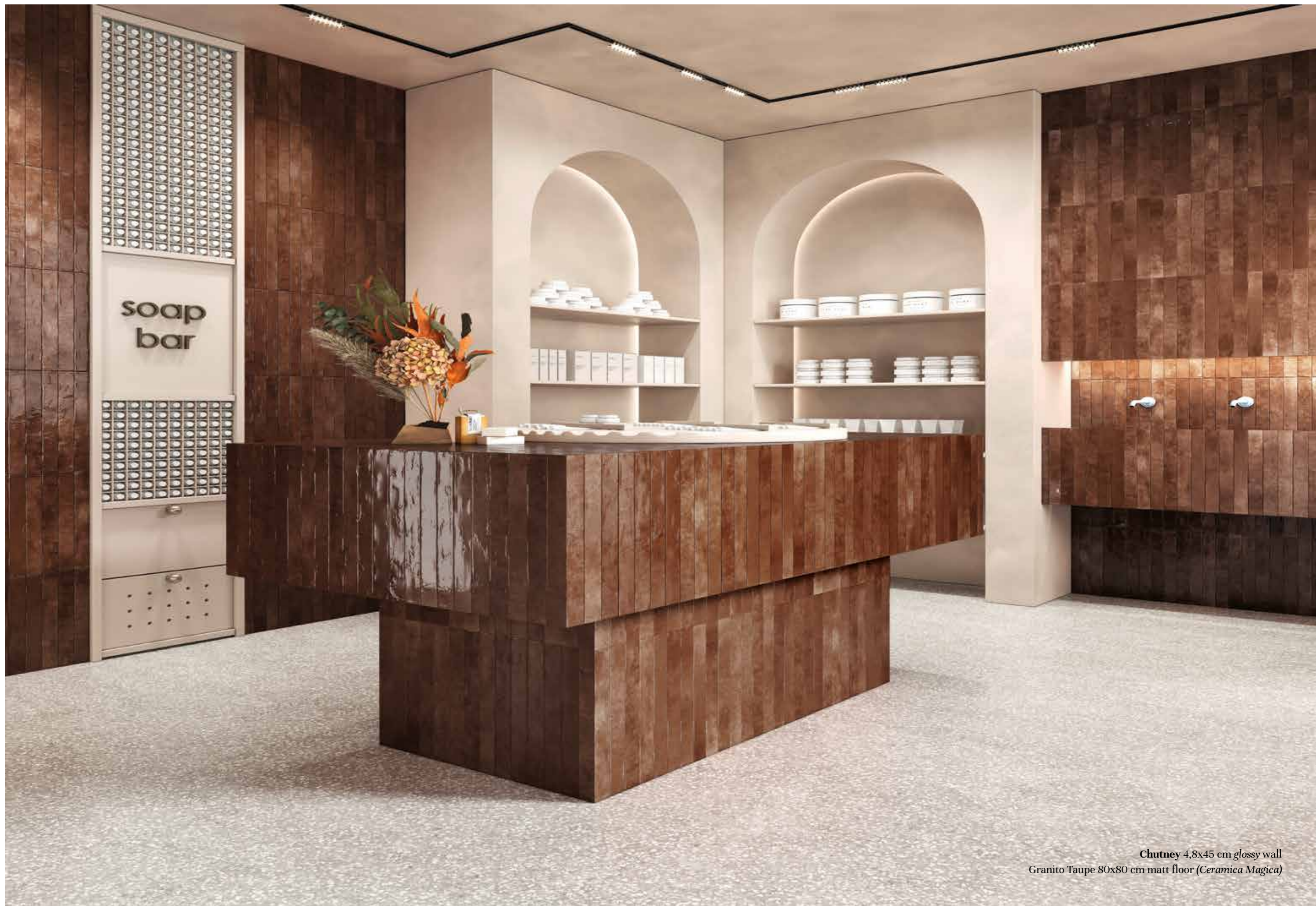
Smoke 4,8x45 cm *glossy wall*
Ceramic 4,8x45 cm *glossy floor*



Chutney



Smoke



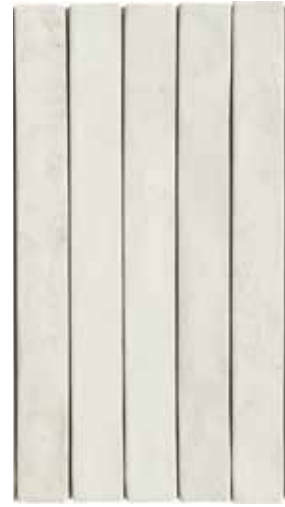
Chutney 4,8x45 cm glossy wall
Granito Taupe 80x80 cm matt floor (Ceramica Magica)

Intreccio SUMMARY

Intreccio PACKAGING | IMBALLI

4,8x45 cm - 2"x18" walls and floors | *pavimenti e rivestimenti*
glossy

± 9,5 mm



Ceramic



Clay



Aquifer



Mint



Emerald



Lagoon



Chutney



Smoke

	BOX SCATOLA			PALLET		
	PCS PZ	SQ.MT. MQ	KG	BOXES SCATOLE	SQ.MT. MQ	KG
 4,8x45 cm glossy 2"x18"	32	0,69	13,50	66	45,54	911

Intreccio

TECHNICAL FEATURES | CARATTERISTICHE TECNICHE











TECHNICAL FEATURES GLAZED PORCELAIN STONEWARE

CONFORMING TO EUROPEAN STANDARDS EN 14411 ISO 13006 APP. G (GROUP BIA GL EB ≤ 0,5%)

CARATTERISTICHE TECNICHE GRÈS PORCELLANATO SMALTATO Conformi a Norme Europee EN 14411 ISO 13006 App. G (Gruppo BIA GL Eb ≤ 0,5%)

TECHNISCHE EIGENSCHAFTEN GLASIERTES FEINSTEINZEUG Gemäß den Europäischen Normen EN 14411 ISO 13006 App. G (Gruppe BIA GL Eb ≤ 0,5%)

CARACTÉRISTIQUES TECHNIQUES GRÈS CÉRAME ÉMAILLÉ Conformes aux Normes Européennes EN 14411 ISO 13006 App. G (Groupe BIA GL Eb ≤ 0,5%)

TECHNICAL FEATURES CARATTERISTICHE TECNICHE TECHNISCHE DATEN CARACTÉRISTIQUES TECHNIQUES	TESTING METHOD METODO DI PROVA PRÜFVERFAHREN NORME D'ESSAIS	REFERENCE STANDARD RIFERIMENTO NORMA STANDARDWERT RÉFÉRENCE NORME	TEST RESULTS VALORE PRODOTTO PRODUKT WERTE RÉSULTATS DE L'ESSAI
 Sizes Dimensioni Abmessungen Dimensions	EN ISO 10545-2	• Length and width - Lunghezza e larghezza Länge und Breite - Longueur et largeur ±0,9mm ±0,6% ±2,0mm	Compliant Conforme Erfüllt Conforme
		• Thickness - Spessore - Stärke - Épaisseur ±0,5mm ±5,0% ±0,5mm	
		• Linearity - Rettilinearità spigoli - Kanten geradheit - Rectitude des arêtes ±0,75mm ±0,5% ±1,5mm	
		• Wedging - Ortogonalità - Rechtwinkligkeit Orthogonalité ±0,75mm ±0,5% ±2,0mm	
		• Warpage - Planarità - Ebeflächigkeit Planéité ±0,75mm ±0,5% ±2,0mm	
		• Appearance: percentage of acceptable tiles, per lot - Aspetto: percentuale di piastrelle accettabili nel lotto - Oberflächenbeschaffenheit: Prozentsatz der Fliesen, die den geforderten Eigenschaften entsprechen - Aspect: pourcentage de carreaux acceptables sur la fourniture totale 95% min.	
 Water absorption Assorbimento acqua Wasseraufnahme Absorption d'eau	EN ISO 10545-3	El _h < 0,5%	Compliant Conforme Erfüllt - Conforme
 Modulus of rupture Resistenza alla flessione Biegefestigkeit Résistance à la flexion	EN ISO 10545-4	Min. 35N/mm ²	Compliant Conforme Erfüllt - Conforme
 Abrasion resistance Resistenza all'abrasione Abriebbeständigkeit Résistance à l'abrasion	EN ISO 10545-7	CLASS 0-5	From 4 to 5 Da 4 a 5 - Von 4 bis 5 De 4 jusqu'à 5
 Thermal expansion coefficient Coefficiente di dilatazione termica lineare Wärmeausdehnung Coefficient de dilatation thermique linéaire	EN ISO 10545-8	Declared value Valore dichiarato Angegebener Wert Valeur déclaré	≤ 9 MK-1
 Thermal shock resistance Resistenza agli sbalzi termici Temperaturwechselbeständigkeit Résistance aux écarts de température	EN ISO 10545-9	Pass according to ISO 10545-1 Test superato in accordo con ISO 10545-1 Test überstanden nach ISO 10545-1 Pv en accord avec norme en 10545-1	Resistant Resistente Widerstandsfähig Résistant
 Glaze crazing resistance Determinazione della resistenza al cavillo Glaserhaarrißbeständigkeit Résistance aux taches	EN ISO 10545-11	Required Richiesta Gefordert Requise	Resistant Resistente Widerstandsfähig Résistant
 Frost resistance Resistenza al gelo Frostbeständigkeit Résistance au gel	EN ISO 10545-12	Pass according to ISO 10545-1 Test superato in accordo con ISO 10545-1 Test überstanden nach ISO 10545-1 Pv en accord avec norme en 10545-1	Resistant Resistente Widerstandsfähig Résistant
 Resistance to low concentrations of acids and alkali Resistenza a basse concentra- zioni di acidi e alcali Beständigkeit gegen schwach konzentrierten Säuren und Laugen Résistance à des basses concentrations d'acides et bases	EN ISO 10545-13	Declared value Valore dichiarato Angegebener Wert Valeur déclaré	From GLA to GLB Da GLA a GLB Von GLA bis GLB De GLA jusqu'à GLB
		Declared value Valore dichiarato Angegebener Wert Valeur déclaré	From GHA to GHB Da GHA a GHB Von GHA bis GHB De GHA jusqu'à GHB
		GB min.	GA
 Stain resistance of glazed porcelain Resistenza alle macchie di piastrelle smaltate Fleckenbeständigkeit von glasierten Fliesen Résistance aux taches des carreaux émaillés	EN ISO 10545-14	Class 3 min Classe 3 min Gruppe 3 min. Classe 3 min	CLASS 5



V3 HIGH