

N

NORGESTONE
essential surfaces

Made in Italy



NovaBell





NORGESTONE

Attraverso la profonda ricerca di **straordinarie pietre provenienti dal Nord Europa** nasce **Norgestone**, il gres porcellanato NovaBell che consegna all'architettura contemporanea **un intenso progetto di superfici essenziali ed equilibrate.**

In-depth research into the **amazing stones from Northern Europe** gives us **Norgestone**, the NovaBell porcelain stoneware that offers contemporary architecture **a collection of simple, tasteful yet high-impact surfaces.**

Surface essentielle

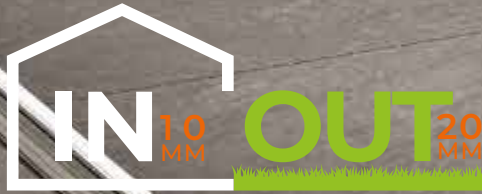
C'est d'une minutieuse recherche parmi les **pierres extraordinaires de l'Europe du Nord que provient Norgestone**, le grès cérame NovaBell qui offre à l'architecture contemporaine **un grand projet de surfaces essentielles et harmonieuses.**

Minimalistische Oberflächen

Eindrucksvolle Natursteinarten aus dem nordeuropäischen Raum sind der Ausgangspunkt für die Entwicklung von **Norgestone**, einem **umfangreichen Feinsteinzeug-Projekt** aus dem Hause NovaBell mit **sachlich-harmonischen Oberflächen** für die moderne Architektur.

- ESSENTIAL SURFACE -

- IN&OUT: NORGESTONE KNOWS NO BOUNDARIES -



- COLOURS IN HARMONY WITH SPACE -

IVORY

TAUPE

LIGHT GREY

DARK GREY

SLATE



- DARK GREY + IVORY -

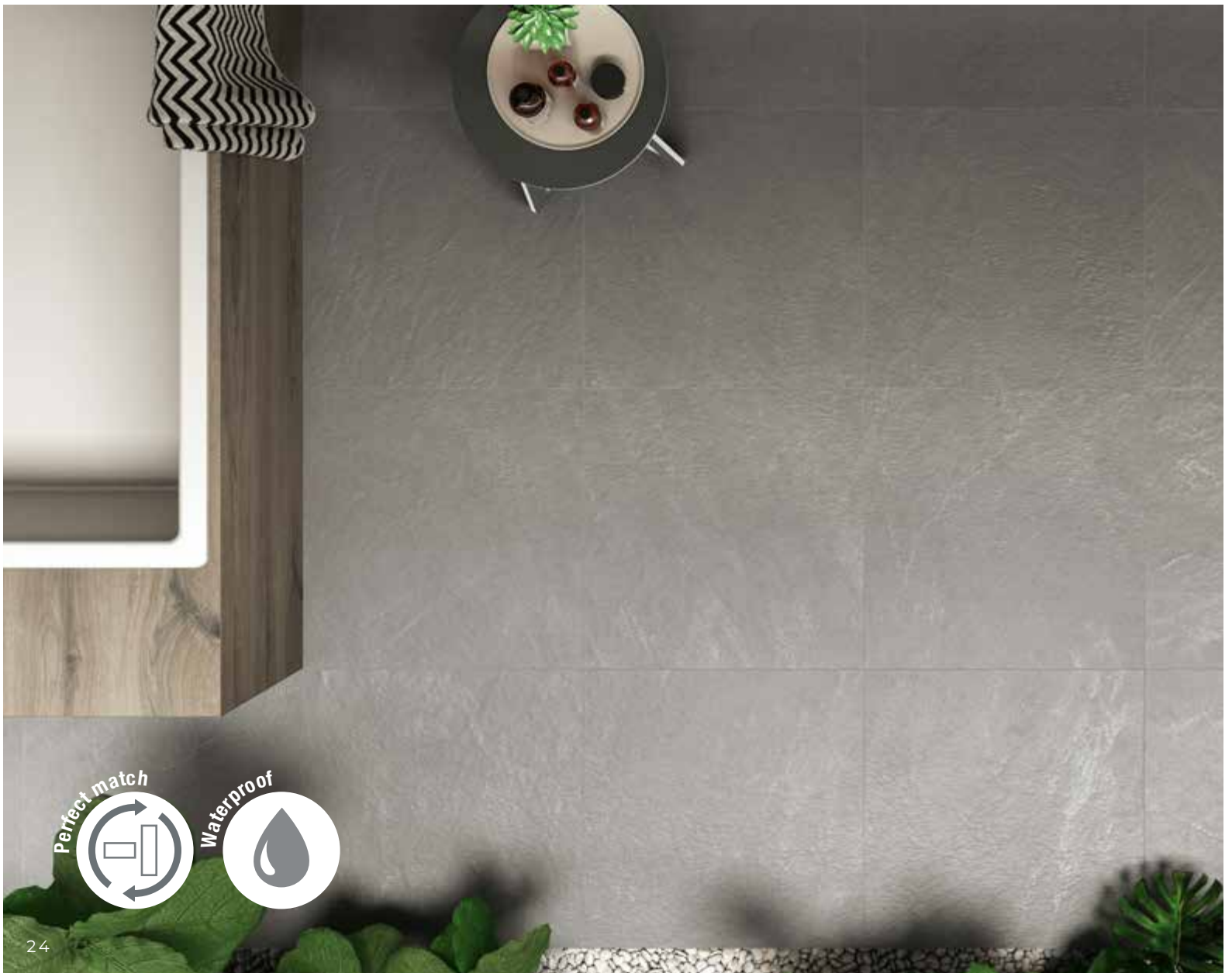
- LIGHT GREY + SLATE -

WALL: Light Grey Struttura Cesello Rettificato 30x120 - 11^{13/16}x47^{1/4} / Light Grey Rettificato 30x120 - 11^{13/16}x47^{1/4}
Slate Rettificato 60x120 - 23^{5/8}x47^{1/4} - EICHE Timber 20x120 - 7^{7/8}x47^{1/4}
FLOOR: Light Grey Rettificato 60x60 - 23^{5/8}x23^{5/8}



Norgestone si unisce al gres porcellanato effetto legno Eiche arricchendo il **Progetto Integrato** e tutte le raffinate combinazioni materiche NovaBell.
La bellezza delle superfici NovaBell non rinuncia alle comodità del miglior gres porcellanato per donare spazi pratici e facili da vivere.

Norgestone joins the Eiche wood look porcelain stoneware to extend the potentials of the **Integrated Project** and all NovaBell's refined combinations of materials. The beauty of NovaBell surfaces goes hand in hand with the convenience of the best porcelain stoneware, for practical, lifestyle-friendly spaces.





Norgestone s'ajoute au grès cérame effet bois Eiche pour étoffer le **Projet intégré** et tous les élégants accords matières NovaBell. La beauté des surfaces NovaBell ne renonce pas à la fonctionnalité du meilleur grès cérame pour composer des espaces pratiques et simples à vivre.

In Verbindung mit dem Feinsteinzeug in Holzoptik Eiche bereichert Norgestone das **integrierte Projekt** ebenso wie alle weiteren anspruchsvollen, materialbetonten Kombinationen aus dem Hause NovaBell. Die vollendete Ästhetik der NovaBell-Oberflächen macht keine Abstriche beim Komfort und eignet sich für eine zweckmäßige, pflegeleichte Raumgestaltung.

NORGESTONE
SNEAKERS



WALL: Ivory Struttura Cesello Rettificato 60x120 - 23^{5/8}x47^{1/4} / Ivory Rettificato 60x120 - 23^{5/8}x47^{1/4}
Slate Struttura Cesello Rettificato 60x120 - 23^{5/8}x47^{1/4} / Slate Rettificato 60x120 - 23^{5/8}x47^{1/4}
FLOOR: Ivory Rettificato 60x120 - 23^{5/8}x47^{1/4}



- IVORY + SLATE -

...UES
SNEAK

Total look



Stain-resistant



Easy to clean



- MULTIFUNCTION OUTDOOR SURFACE -

Antislip



Resistant to salt



Norgestone est le fruit d'une **profonde connaissance de la matière céramique**.
Sa fabrication respecte toutes les valeurs du **Made in Italy** : un grès cérame à faible impact
sur l'environnement, à base de **matières premières d'excellence**.

Das Feinsteinzeug Norgestone basiert auf der **profunden Kenntnis keramischer Werkstoffe**
und wird nach den Leitprinzipien des „**Made in Italy**“ aus **hervorragenden Rohstoffen**
umweltschonend produziert.



- LIGHT GREY -

Norgestone si integra a tutte le collezioni NovaBell per arricchire il progetto integrato, la nuova tendenza dell'interior decoration che prevede la contaminazione tra effetti materici e stilistici.

Norgestone integrates with all NovaBell collections to enhance the integrated project, the new interior decoration trend that involves a fusion of tactile and stylistic effects.



WALL: Muretto Mix Light Grey 30x60 - 11^{13/16}x23^{5/8} / GLOBAL Struttura Bianco Matt 120x45 - 47^{1/4}x17^{11/16} / Bianco Matt 120x45 - 47^{1/4}x17^{11/16}
FLOOR: Light Grey 60x120 - 23^{5/8}x47^{1/4} / Struttura Cesello Light Grey 60x120 - 23^{5/8}x47^{1/4}

Norgestone s'assortit à toutes les collections NovaBell pour étayer le projet intégré, tout comme le veut la nouvelle tendance en déco intérieure qui privilégie les fusions entre effets de matières et styles.

Norgestone fügt sich in alle NovaBell Kollektionen ein und bereichert das integrierte Projekt, das unterschiedliche Materialoptiken zu neuartigen Kompositionen zusammenführt und einen neuen Trend im Interior Design darstellt.

N TAUPE

Rettificato. Rectified. Rectifié. Geschliffen.



cm. 60x120
inch. 23⁵/₈x47¹/₄

cm. 30x120
inch. 11¹³/₁₆x47¹/₄

cm. 60x60
inch. 23⁵/₈x23⁵/₈

cm. 30x60
inch. 11¹³/₁₆x23⁵/₈



cm. 80x80
inch. 31¹/₂x31¹/₂



80x80 - 31¹/₂x31¹/₂
NST 48RT Taupe Rettificato

02
1075



60x60 - 23⁵/₈x23⁵/₈
NST 40RT Taupe Rettificato

03
1065



60x120 - 23⁵/₈x47¹/₄
NST 42RT Taupe Rettificato

02
1075



60x120 - 23⁵/₈x47¹/₄
NST 41RT Struttura Cesello Taupe Rettificato

02
1085



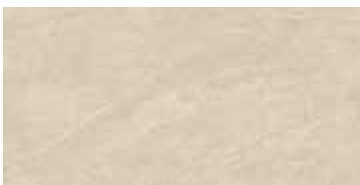
30x120 - 11¹³/₁₆x47¹/₄
NST 43RT Taupe Rettificato

03
1080



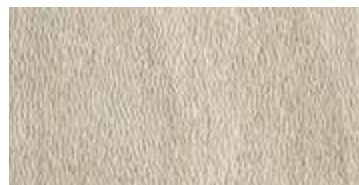
30x120 - 11¹³/₁₆x47¹/₄
NST 411R Struttura Cesello Taupe Rettificato

03
1085



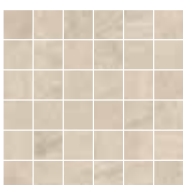
30x60 - 11¹³/₁₆x23⁵/₈
NST 46RT Taupe Rettificato

07
1035



30x60 - 11¹³/₁₆x23⁵/₈
NST 461R Struttura Cesello
Taupe Rettificato

07
1045



30x30 - 11¹³/₁₆x11¹³/₁₆
NST 445N Mos. 5x5
38 Taupe



30x60 - 11¹³/₁₆x23⁵/₈
NST 447N Muretto Taupe

04
3130



30x60 - 11¹³/₁₆x23⁵/₈
NST 446N Muretto Mix Taupe

04
3130

	01 670
Gradino Rett. 33x120x4	
NST G41K	
	01 676
Angolo DX Rett. 33x120x4	
NST G42K	
	01 676
Angolo SX Rett. 33x120x4	
NST G45K	
	15 230
Battiscopa 7x60	
NST B40K	

N LIGHT GREY

Rettificato. Rectified. Rectifié. Geschliffen.



cm. 60x120
inch. 23⁵/₈x47¹/₄

cm. 30x120
inch. 11¹³/₁₆x47¹/₄

cm. 60x60
inch. 23⁵/₈x23⁵/₈

cm. 30x60
inch. 11¹³/₁₆x23⁵/₈



cm. 80x80
inch. 31¹/₂x31¹/₂



80x80 - 31¹/₂x31¹/₂
NST 18RT Light Grey Rettificato

02
1075



60x60 - 23⁵/₈x23⁵/₈
NST 10RT Light Grey Rettificato

03
1065



60x120 - 23⁵/₈x47¹/₄
NST 12RT Light Grey Rettificato

02
1075



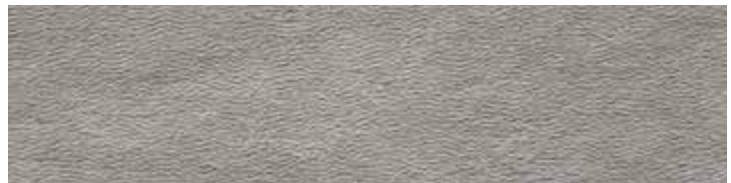
60x120 - 23⁵/₈x47¹/₄
NST 11RT Struttura Cesello Light Grey Rettificato

02
1085



30x120 - 11¹³/₁₆x47¹/₄
NST 13RT Light Grey Rettificato

03
1080



30x120 - 11¹³/₁₆x47¹/₄
NST 111R Struttura Cesello Light Grey Rettificato

03
1085



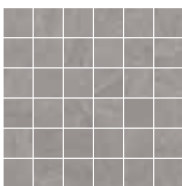
30x60 - 11¹³/₁₆x23⁵/₈
NST 16RT Light Grey Rettificato

07
1035



30x60 - 11¹³/₁₆x23⁵/₈
NST 161R Struttura Cesello
Light Grey Rettificato

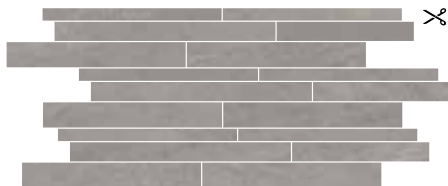
07
1045



30x30 - 11¹³/₁₆x11¹³/₁₆
NST 115N Mos. 5x5
40 Light Grey



10
3115



30x60 - 11¹³/₁₆x23⁵/₈
NST 117N Muretto Light Grey

04
3130



30x60 - 11¹³/₁₆x23⁵/₈
NST 116N Muretto Mix Light Grey

04
3130

01 670
Gradino Rett. 33x120x4
NST G11K
01 676
Angolo DX Rett. 33x120x4
NST G12K
01 676
Angolo SX Rett. 33x120x4
NST G15K
15 230
Battiscopa 7x60
NST B10K

N SLATE

Rettificato. Rectified. Rectifié. Geschliffen.



cm. 60x120
inch. 23⁵/₈x47¹/₄

cm. 30x120
inch. 11¹³/₁₆x47¹/₄

cm. 60x60
inch. 23⁵/₈x23⁵/₈

cm. 30x60
inch. 11¹³/₁₆x23⁵/₈



cm. 60x120
inch. 23⁵/₈x47¹/₄



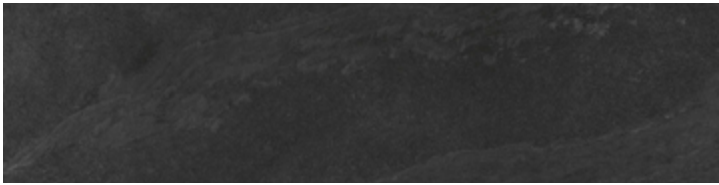
60x120 - 23⁵/₈x47¹/₄
NST 92RT Slate Rettificato

02
1075



60x120 - 23⁵/₈x47¹/₄
NST 91RT Struttura Cesello Slate Rettificato

02
1085



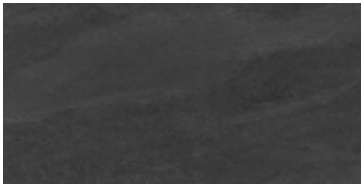
30x120 - 11¹³/₁₆x47¹/₄
NST 93RT Slate Rettificato

03
1080



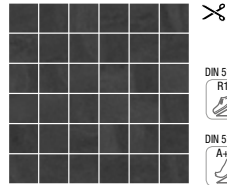
30x120 - 11¹³/₁₆x47¹/₄
NST 911R Struttura Cesello Slate Rettificato

03
1085



30x60 - 11¹³/₁₆x23⁵/₈
NST 96RT Slate Rettificato

07
1035



30x30 - 11¹³/₁₆x11¹³/₁₆
NST 995N Mos. 5x5
Slate

10
3115



30x60 - 11¹³/₁₆x23⁵/₈
NST 961R Struttura Cesello
Slate Rettificato

07
1045



60x60 - 23⁵/₈x23⁵/₈
NST 90RT Slate Rettificato

03
1065



30x60 - 11¹³/₁₆x23⁵/₈
NST 996N Muretto Mix Slate

04
3130



30x60 - 11¹³/₁₆x23⁵/₈
NST 997N Muretto Slate

04
3130

	01	670
Gradino Rett. 33x120x4 NST G91K		
	01	676
Angolo DX Rett. 33x120x4 NST G92K		
	01	676
Angolo SX Rett. 33x120x4 NST G95K		
	15	230
Battiscopa 7x60 NST B90K		



60x120 - 23⁵/₈x47¹/₄
NST 99RT Slate 20mm Rettificato

01
1125

PEZZI SPECIALI ON DEMAND 20MM* Special coordinated pieces. Zusammenstellbare Formteile. Pièces spéciales coordonnées.

Toro Gradino Rettificato 30x120	Gradino Elle Rettificato 30x120x4	Bordo Rett. Antiderapant 30x60	Bordo Angolo SX Rett. 30x60	Bordo Angolo DX Rett. 30x60	Griglia Rettificata 20x60	Griglia Angolo SX Rett. 20x60	Griglia Angolo DX Rett. 20x60
02 656	01 665	02 627	02 650	02 650	02 590	02 590	02 590
NST G93K	NST G92K	NST W91K	NST W92K	NST W94K	NST W95K	NST W96K	NST W97K

N IVORY

Rettificato. Rectified. Rectifié. Geschliffen.



60x120 - 23⁵/₈x47¹/₄
NST 82RT Ivory Rettificato

02
1075



30x120 - 11¹³/₁₆x47¹/₄
NST 83RT Ivory Rettificato

03
1080



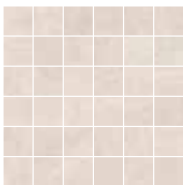
30x60 - 11¹³/₁₆x23⁵/₈
NST 86RT Ivory Rettificato

07
1085



60x60 - 23⁵/₈x23⁵/₈
NST 80RT Ivory Rettificato

03
1065



30x30 - 11¹³/₁₆x11¹³/₁₆
NST 885N Mos. 5x5
 Ivory



10
3115



30x60 - 11¹³/₁₆x23⁵/₈
NST 887N Muretto Ivory

04
3130



cm. 60x120
 inch. 23⁵/₈x47¹/₄

cm. 30x120
 inch. 11¹³/₁₆x47¹/₄

cm. 60x60
 inch. 23⁵/₈x23⁵/₈

cm. 30x60
 inch. 11¹³/₁₆x23⁵/₈



60x120 - 23⁵/₈x47¹/₄
NST 81RT Struttura Cesello Ivory Rettificato

02
1085



30x120 - 11¹³/₁₆x47¹/₄
NST 811R Struttura Cesello Ivory Rettificato

03
1085



30x60 - 11¹³/₁₆x23⁵/₈
NST 861R Struttura Cesello
 Ivory Rettificato

07
1045

	01 670
Gradino Rett. 33x120x4 NST G81K	
	01 676
Angolo DX Rett. 33x120x4 NST G82K	
	01 676
Angolo SX Rett. 33x120x4 NST G85K	
	15 230
Battiscopa 7x60 NST B80K	

The International reference standards: ANSI - ASTM **NATURALE**

Characteristics and Test methods 	Requirements ANSI A 137.1	Our general values
Determination of water absorption - (ASTM C 373)	Average value $E_b \leq 0,5 \%$	Average value $\leq 0,06 \%$
Classification	Definition § 3.0	Porcelain tiles
		Physical properties
Breaking strength - (ASTM C 648)	Average ≥ 250 lbf (1.11 kN) Individual ≥ 225 lbf (1.00 kN)	Complies
Visible abrasion - (ASTM C 1027)	As reported	Class 0 - 5
Raccomanded use	Novabell criterion (see Annex N - ISO 13006 / EN 14411)	Class 4
Thermal shock resistance (ASTM C 428)	Pass	Complies
Crazing resistance (ASTM C 424)	Pass	Complies
Resistance to freeze/thaw cycling (ASTM C 1026)	As reported	Resistant
DCOF Resistance (ANSI A 137.1 Section 9.6)	≥ 0.42 ⁽¹⁾	DCOF ≥ 0.42
Bond strength (ASTM C 482)	≥ 50 psi (0.34 MPa)	> 1 MPa
Color Uniformity (ASTM C 609 and ANSI A 137.1 Section 9.3) ⁽²⁾	V0 - 3 Judds	See the specific section
		Chemical properties
Chemical resistance (ASTM C 650)	As reported	Resistant
Stain resistance (ASTM C 1378)	As reported	Resistant
		Dimensions - Calibrated tiles
Dimensions - (ASTM C 499) - (ASTM C 485) - (ASTM C 502)	See ANSI A 137.1 - Tab.10	Complies
		Dimensions - Rectified tiles
Dimensions - (ASTM C 499) - (ASTM C 485) - (ASTM C 502)	See ANSI A 137.1 - Tab.10	Complies
Scrath hardenss of surface according to Mohs'	ex BS 6431-13 / ex EN 101	≥ 5

(1) For level interior spaces expected to be walked upon when wet - (2) For V0 tiles only




**NORGESTONE
NATURALE**

 Utilizzare il **QR CODE** per scaricare le schede tecniche

 Use the **QR CODE** to download data sheets




**NORGESTONE
20MM**

 Veuillez utiliser le **QR CODE** pour télécharger les fiches techniques

 **QR CODE** benutzen um die technische datenblätter runter zu laden

The international reference standards: ISO - EN

NATURALE

Characteristics and Test methods 	Requirements EN 14411 ⁽¹⁾ – G / ISO 13006 ⁽²⁾ - G	Our general values
Determination of water absorption - (ISO 10545-3)	Average value $E_b \leq 0,5\%$ / Individual maximum 0,6%	$\leq 0,06\%$ Average value and individual maximum
Classification	Definition § 3.2 and § 3.7	BI₃ – Porcelain tiles
		Physical properties
Modulus of rupture - (ISO 10545-4)	Average ≥ 35 N/mm ²	≥ 35 N/mm ²
Breaking strength - (ISO 10545-4)	Average ≥ 1300 N for thickness $\geq 7,5$ mm Average ≥ 700 N for thickness $< 7,5$ mm	Complies
Resistance to surface abrasion - (ISO 10545-7)	Abrasion class and cycles passed	Class 0 - 5
Resistance to deep abrasion - (ISO 10545 - 6)	Max volume abraded < 175 / mm ³	< 175 / mm ³
Raccomanded use	Novabell criterion (see Annex N - ISO 13006 / EN 14411)	Class 4
Coefficient of linear thermal expansion (ISO 10545-8)	Declared value ⁽¹⁾ / Test method available ⁽²⁾	$< 7,1 \times 10^{-6}$ °C ⁻¹
Thermal shock resistance (ISO 10545-9)	Pass according to EN ISO 10545-1 ⁽¹⁾ / Test method available ⁽²⁾	Complies
Crazing resistance (ISO 10545-11)	Pass according to EN ISO 10545-1 ⁽¹⁾ / Required ⁽²⁾	Complies
Frost resistance (ISO 10545-12)	Pass according to EN ISO 10545-1 ⁽¹⁾ / Required ⁽²⁾	Complies
Moisture expansion (ISO 10545-10)	Declared value ⁽¹⁾ / Test method available ⁽²⁾	$\leq 0,2$ mm/m
Small colour differences (ISO 10545-16)	$\Delta E_{cmc} < 0,75^{(1)}$	If agreed
Impact resistance - (ISO 10545-5)	Declared value ⁽¹⁾ / Test method available ⁽²⁾	COR $> 0,75$
Reaction to fire	Class A1 or A1 _{FL} ⁽¹⁾	A1 _{FL} Classified Without Testing (CWT) – 96/603
		Chemical properties
Chemical resistance -(GL) (ISO 10545-13)		
Resistance to low and high concentrations of acids and alkalis	Declared value ⁽¹⁾ / Manufacturer is to state classification ⁽²⁾	Resistant (see "Maintenance and care" section)
Resistance to household chemicals and swimming pool salts	Minimum class B	G A
Resistance to staining (ISO 10545-14)	Minimum class 3	5 (see "Maintenance and care" section)
Release of dangerous substances (ISO 10545-15)	Declared value ⁽¹⁾ / Test method available ⁽²⁾	Pb $< 0,1$ / Cd $< 0,01$ mg/dm ²
		Dimensions and surface quality
Dimensions - (ISO 10545-2)	See ANNEX G	Complies
Surface quality - (ISO 10545-2 § 7)	A minimum of 95% of the tiles shall be free from visible defects that would impair the appearance of a major area of tiles	Complies

(1) Requirements according to EN 14411


(2) Requirements according to ISO 13006

Test methods	Requirements and references	Our general values
Determination of anti-slip properties – Workrooms and fields of activities with raised slip danger, walking method-Ramp test (DIN 51130)-Germany	BGR / ASR From R9 to R13	R 10
Determination of anti – slip properties. Wet-loaded barefoot areas – Walking method – Ramp test. (DIN 51097) - Germany	GUV-I 8527 A – B – C	A + B
Dynamic Coefficient Friction wet and dry condition (BCR-ex BCRA) Italy	DM n. 236 / 1989 $\mu > 0,40$	$\mu > 0,40$
Scrath hardenss of surface according to Mohs'	ex BS 6431-13 / ex EN 101	≥ 5

 La tabella in italiano con i dati tecnici è scaricabile su www.novabell.it

 The English language technical specification for each collection can be downloaded from www.novabell.it

 Si vous le souhaitez, téléchargez le tableau contenant les données techniques en français en allant sur www.novabell.it

 Die Tabelle in deutscher Sprache kann auf www.novabell.it heruntergeladen werden.

MERCHANDISING



PG NST FT



Struttura Cesello 60x120



PG NST 60x120



PG NST 80



PG NST 120



PG NST 60









PG NST 60



SCANST6



SCA-NST

	SCATOLA / BOX			PALLET			≡ ▲
	pz	m2	kg	box	m2	kg	
60x120	2	1,440	30,7 	32	46,080	983	10
30x120	3	1,080	23,8	24	25,920	571	10
60x60	3	1,080	22,5	40	43,200	900	10
30x60	7	1,260	25,9 	40	50,400	1036	10
80x80	2	1,280	27,9 	40	51,200	1116	10,5
60x180	1	1,080	48,0 	20	21,600	960	20
60x120	1	0,720	32,2 	32	23,040	1030	20
60x90	1	0,540	23,9	44	26,760	1052	20
Modulo 3 formati	1 cp.	1,620	71,7 	14 cp.	22,68	1004	20



IT - I laboratori di ricerca NovaBell hanno creato una nuova generazione di superfici, caratterizzate dalla innovativa tecnologia digitale ad alta definizione.

GB - The NovaBell research laboratories have created a new generation of surfaces, featuring innovative high-definition digital technology.

D - Die NovaBell Forschungslabors haben eine neue Generation von Oberflächen entwickelt, die durch die innovative hoch auflösende Digitaltechnologie gekennzeichnet sind.

F - Les laboratoires de recherche NovaBell ont créé une nouvelle génération de surfaces, qui se caractérisent par une technologie numérique haute définition innovante.

ES - Los laboratorios de investigación NovaBell han creado una nueva generación de superficies, caracterizadas por la innovadora tecnología digital de alta definición.

RU - В научно-исследовательской лаборатории NOVABELL было разработано новое поколение поверхностей, отличающихся инновационной цифровой технологией высокого разрешения.

**TECNOLOGIA, INNOVAZIONE
E RICERCA NOVABELL**

LEED® CERTIFICATION COMPLIANT

NORGESTONE E' UN PRODOTTO CON PARTICOLARI CARATTERISTICHE DI ECOSOSTENIBILITA', CHE CONTRIBUISCE ALL'OTTENIMENTO DEI CREDITI PER LA CERTIFICAZIONE LEED (LEADERSHIP IN ENERGY AND ENVIROMENTAL DESIGN).



NORGESTONE IS A PRODUCT WITH PARTICULAR ENVIRONMENTAL SUSTAINABILITY CHARACTERISTICS, THAT HELPS IN OBTAINING POINTS FOR LEED (LEADERSHIP IN ENERGY AND ENVIRONMENTAL DESIGN) CERTIFICATION.

NORGESTONE IST EIN AUSGESPROCHEN UMWELTFREUNDLICHES PRODUKT, DAS ZUM ERREICHEN DER PUNKTE FÜR DIE ZERTIFIZIERUNG NACH LEED (LEADERSHIP IN ENERGY AND ENVIROMENTAL DESIGN) BEITRÄGT.

LA SERIE NORGESTONE PRESENTE DE CARACTERISTIQUES SPECIFIQUES DE DEVELOPPEMENT DURABLE; ELLE CONTRIBUS A OBTENIR DE CREDITS POUR LA CERTIFICATION LEED (LEADERSHIP IN ENERGY AND ENVIROMENTAL DESIGN).

NORGESTONE ES UN PRODUCTO CON CARACTERÍSTICAS DE SOSTENIBILIDAD MEDIOAMBIENTAL ESPECIALES, QUE FACILITA LA OBTENCIÓN DE PUNTOS PARA LA CERTIFICACIÓN LEED (LEADERSHIP IN ENERGY AND ENVIRONMENTAL DESIGN) LIDERAZGO EN ENERGÍA Y DISEÑO AMBIENTAL.

NORGESTONE - ЭТО ПРОДУКЦИЯ СО СПЕЦИАЛЬНЫМИ ХАРАКТЕРИСТИКАМИ ЭКОЛОГИЧЕСКОЙ ЭФФЕКТИВНОСТИ, ПОЗВОЛЯЮЩАЯ ПОЛУЧАТЬ ЗАЧЕТНЫЕ ОЧКИ ДЛЯ СЕРТИФИКАТА LEED (LEADERSHIP IN ENERGY AND ENVIROMENTAL DESIGN).



CAT-NST



NovaBell

NOVABELL SpA CERAMICHE ITALIANE
via Molino, 1 - 42014 Roteglia (RE), Italia
T +39 0536 86 11 11 - F +39 0536 85 12 05
info@novabell.it - export@novabell.it
www.novabell.it

